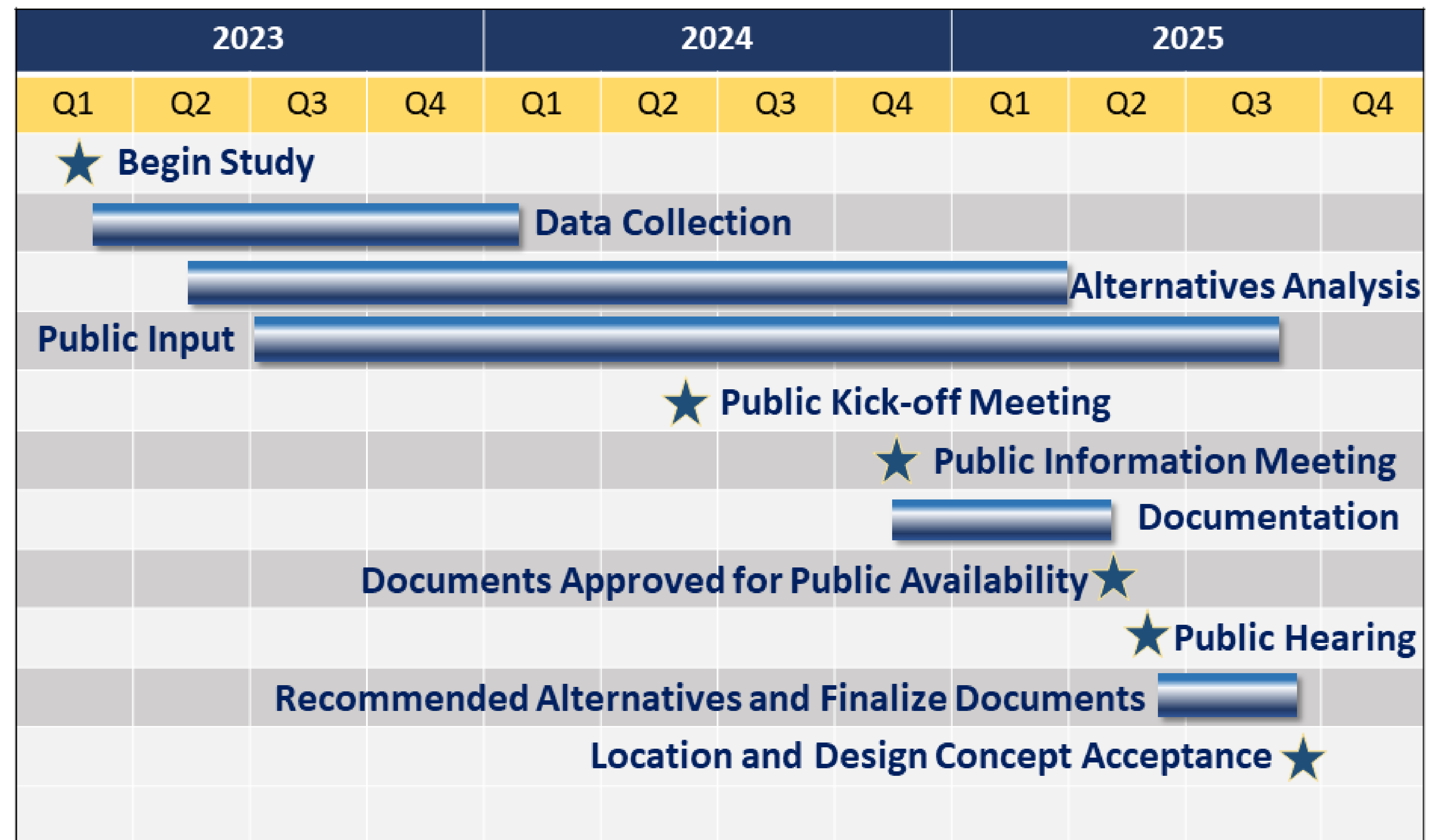


Glades Cut Off Road (CR 709) Project Development and Environment (PD&E) Study
From Range Line Road to Selvitz Road
St. Lucie County, FL

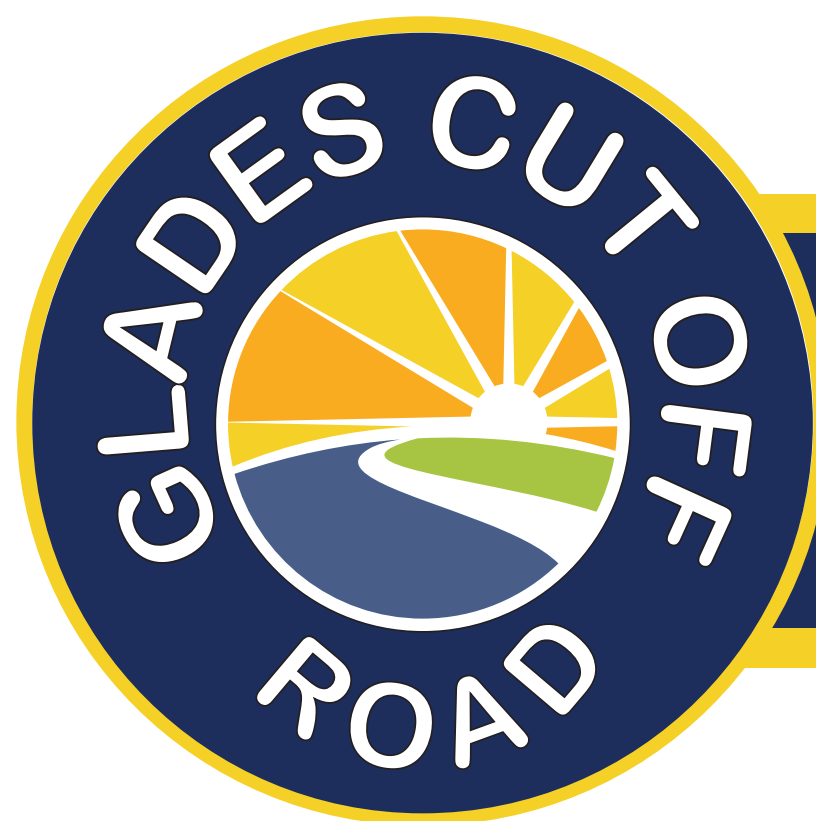
Financial Project Identification (FPID) Number: 452761-1-22-01
Efficient Transportation Decision Making (ETDM) Number: 14533

SCHEDULE

Right-of-way, design and construction are not currently funded.



Schedule is tentative, subject to change



Glades Cut Off Road (CR 709) Project Development and Environment (PD&E) Study
From Range Line Road to Selvitz Road
St. Lucie County, FL

Financial Project Identification (FPID) Number: 452761-1-22-01
Efficient Transportation Decision Making (ETDM) Number: 14533

CONTACT INFORMATION

County Engineer Contact Information:

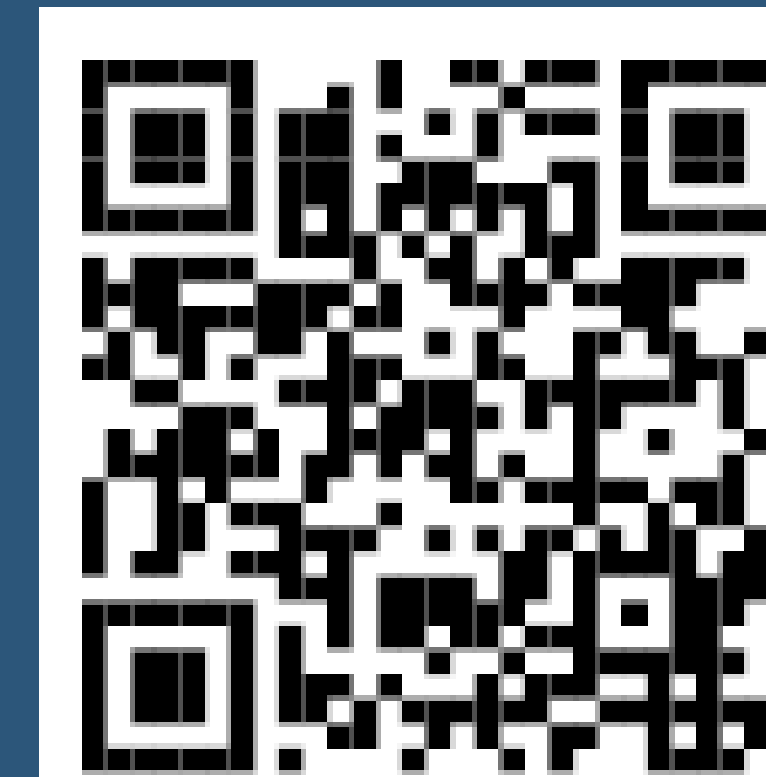
Dan Zrallack, P.E.
St. Lucie County
2300 Virginia Avenue
Fort Pierce, FL 34982
Telephone: (772) 462-1707

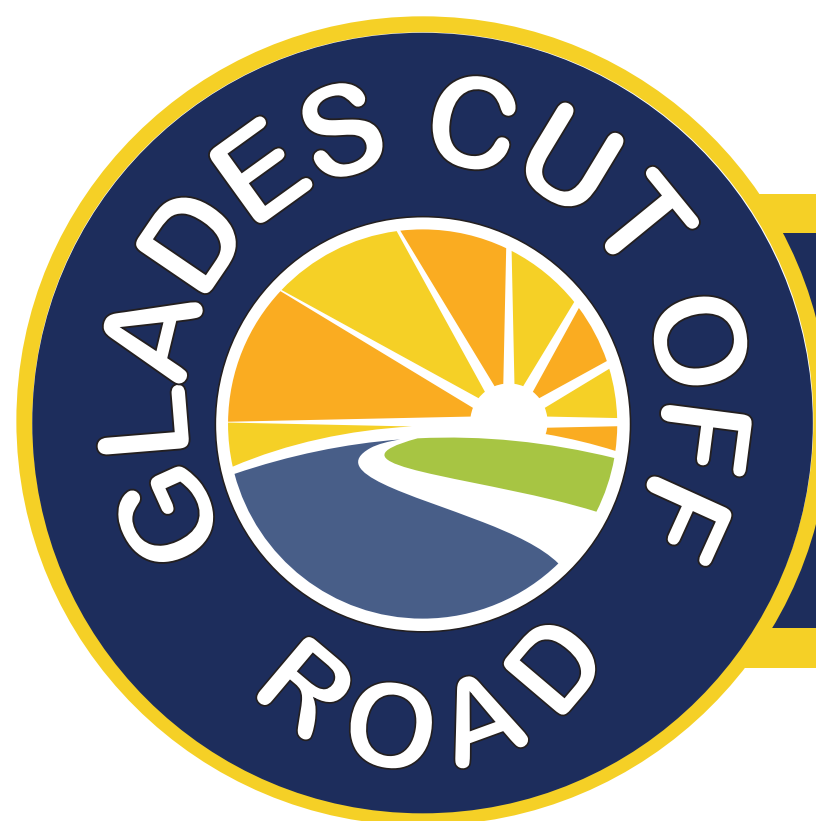
Consultant Project Manager Contact Information:

Lisa Stone, P.E.
Kimley-Horn and Associates, Inc.
1920 Wekiva Way, Suite 200
West Palm Beach, FL 33411
Telephone: (561) 845-0665

Project E-mail: GladesCutOff@kimley-horn.com

Scan QR Code to go to Project Website
www.GladesCutOffRoad.com





Glades Cut Off Road (CR 709) Project Development and Environment (PD&E) Study
From Range Line Road to Selvitz Road
St. Lucie County, FL

Financial Project Identification (FPID) Number: 452761-1-22-01
Efficient Transportation Decision Making (ETDM) Number: 14533

TITLE VI COMPLIANCE

The St. Lucie County Board of County Commissioners is required to comply with various

**Non-discrimination laws and regulations,
including**

Title VI of the Civil Rights Act of 1964

Public participation is solicited without regard to race, color, national origin, age, sex, religion,
disability or family status.

Persons wishing to express their concerns relative to St. Lucie County compliance with Title VI may do so
by contacting:

Kristi Wong
St. Lucie County Human Resources and
Risk Management Director
2300 Virginia Avenue
Fort Pierce, FL 34982
(772)462-1546
wongk@stlucieco.org

All inquiries or complaints will
be handled according to St. Lucie
County procedure and in a prompt
and courteous manner.

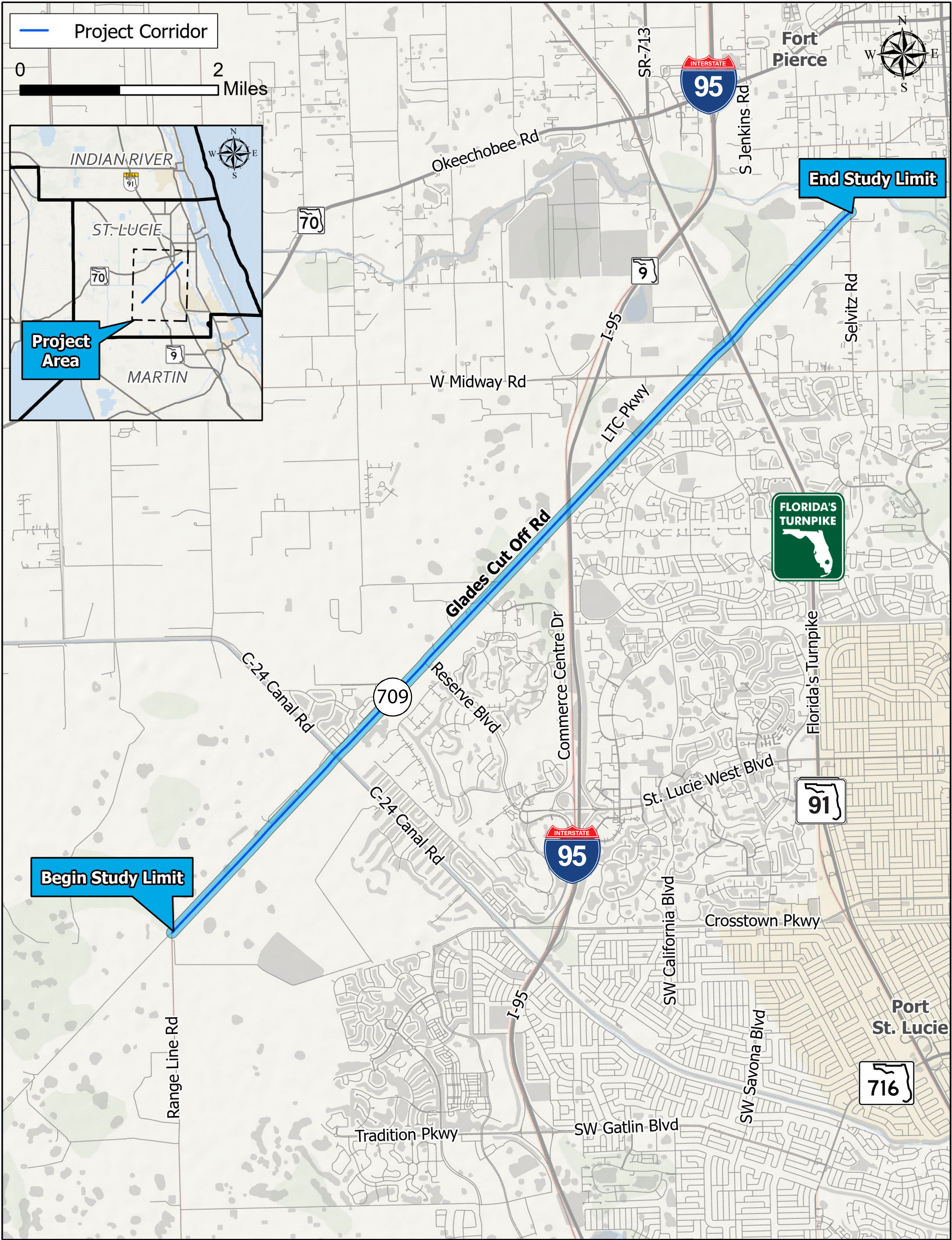


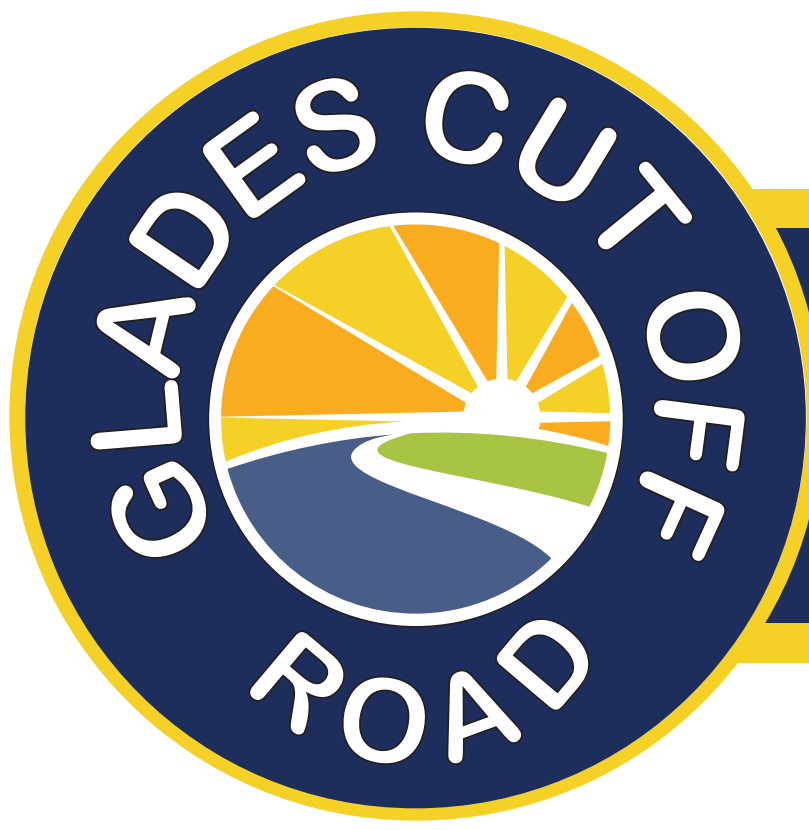
PD&E PROCESS



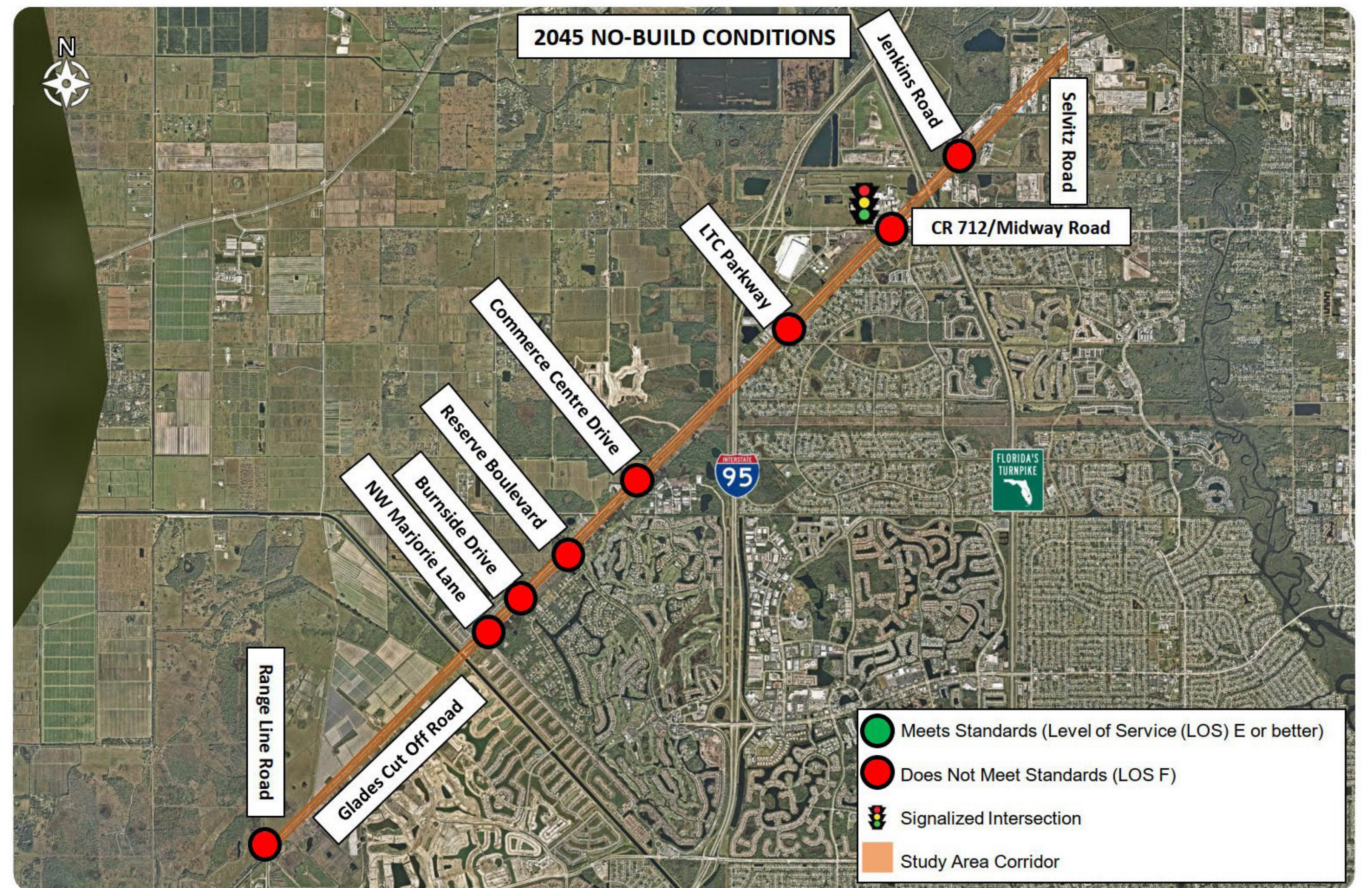
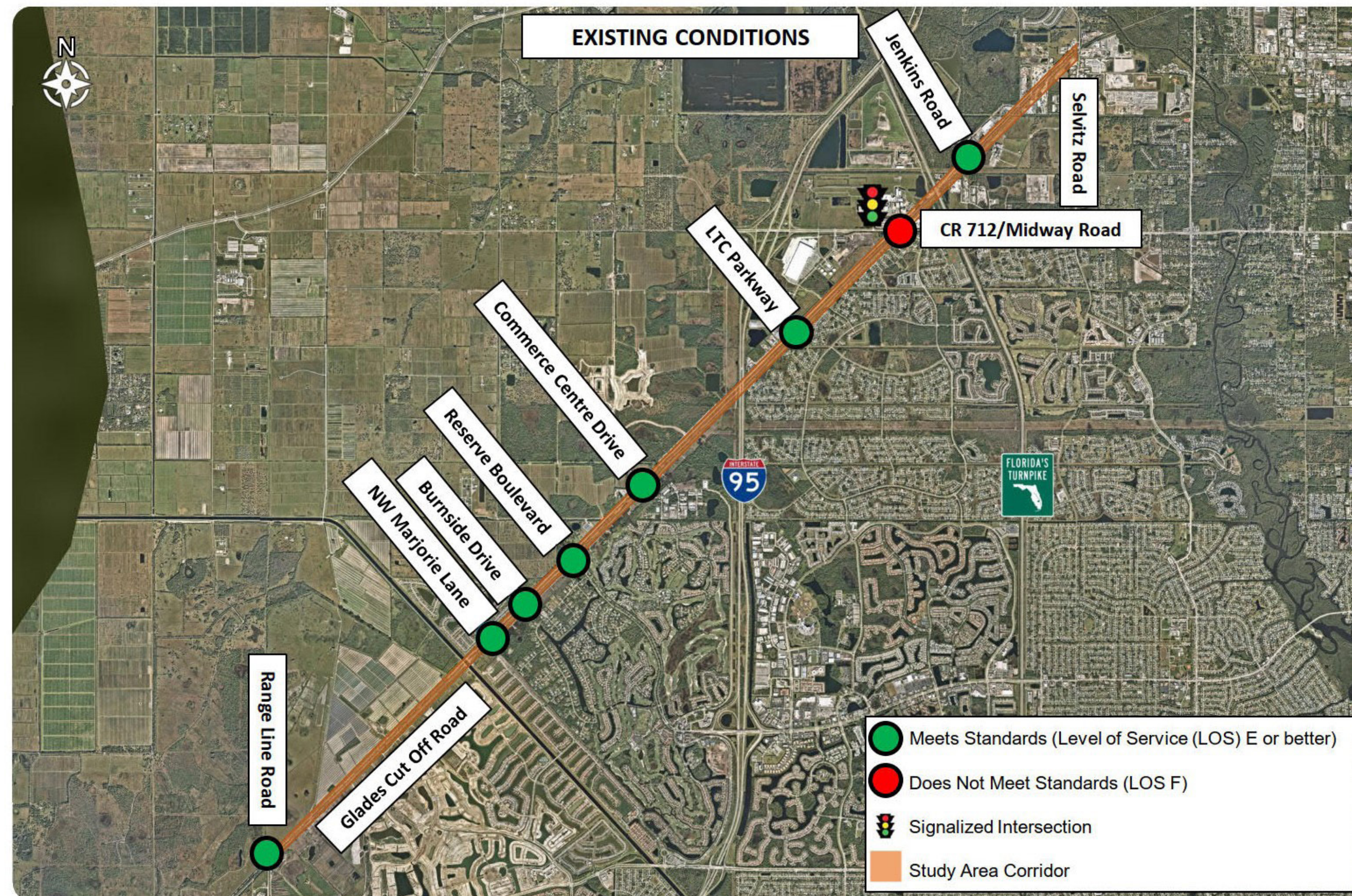


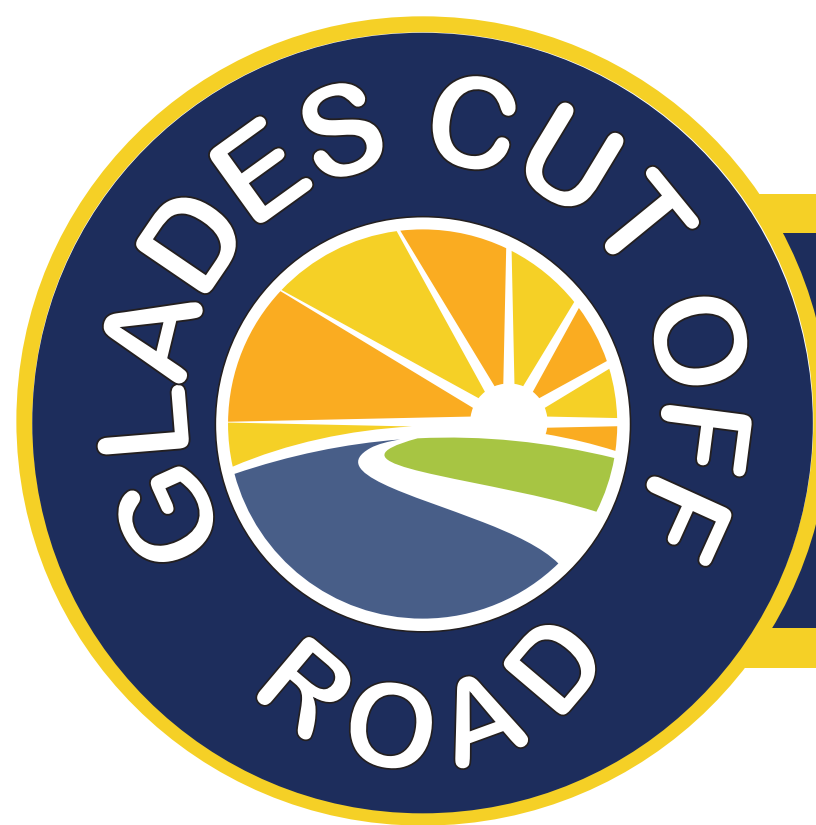
PROJECT LOCATION MAP





TRAFFIC





Glades Cut Off Road (CR 709) Project Development and Environment (PD&E) Study
From Range Line Road to Selvitz Road
St. Lucie County, FL

Financial Project Identification (FPID) Number: 452761-1-22-01
Efficient Transportation Decision Making (ETDM) Number: 14533

EFFECTS EVALUATION

SOCIAL

- Community Resources
- Parks and Recreational Resources
- Potential Relocations

CULTURAL ENVIRONMENT

- Historical Resources
- Archaeological Resources

NATURAL

- Wetlands
- Wildlife and Habitat
- Water Quality
- Floodplains

PHYSICAL

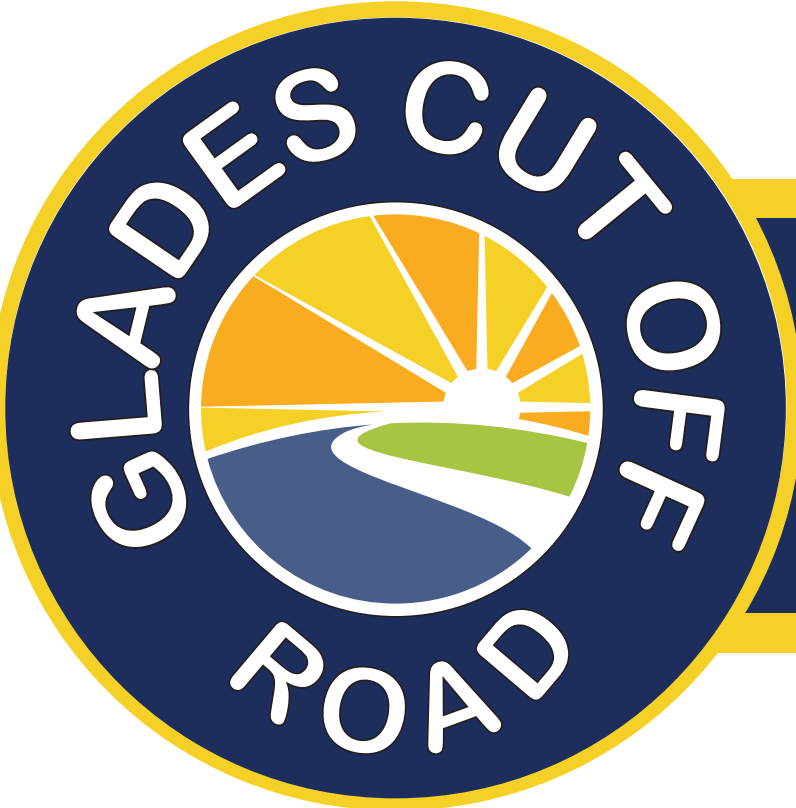
- Air Quality
- Contamination
- Noise



Studies conducted in accordance with:

- Executive Order 11988 *Floodplain Management*
- Executive Order 11990 *Protection of Wetlands*

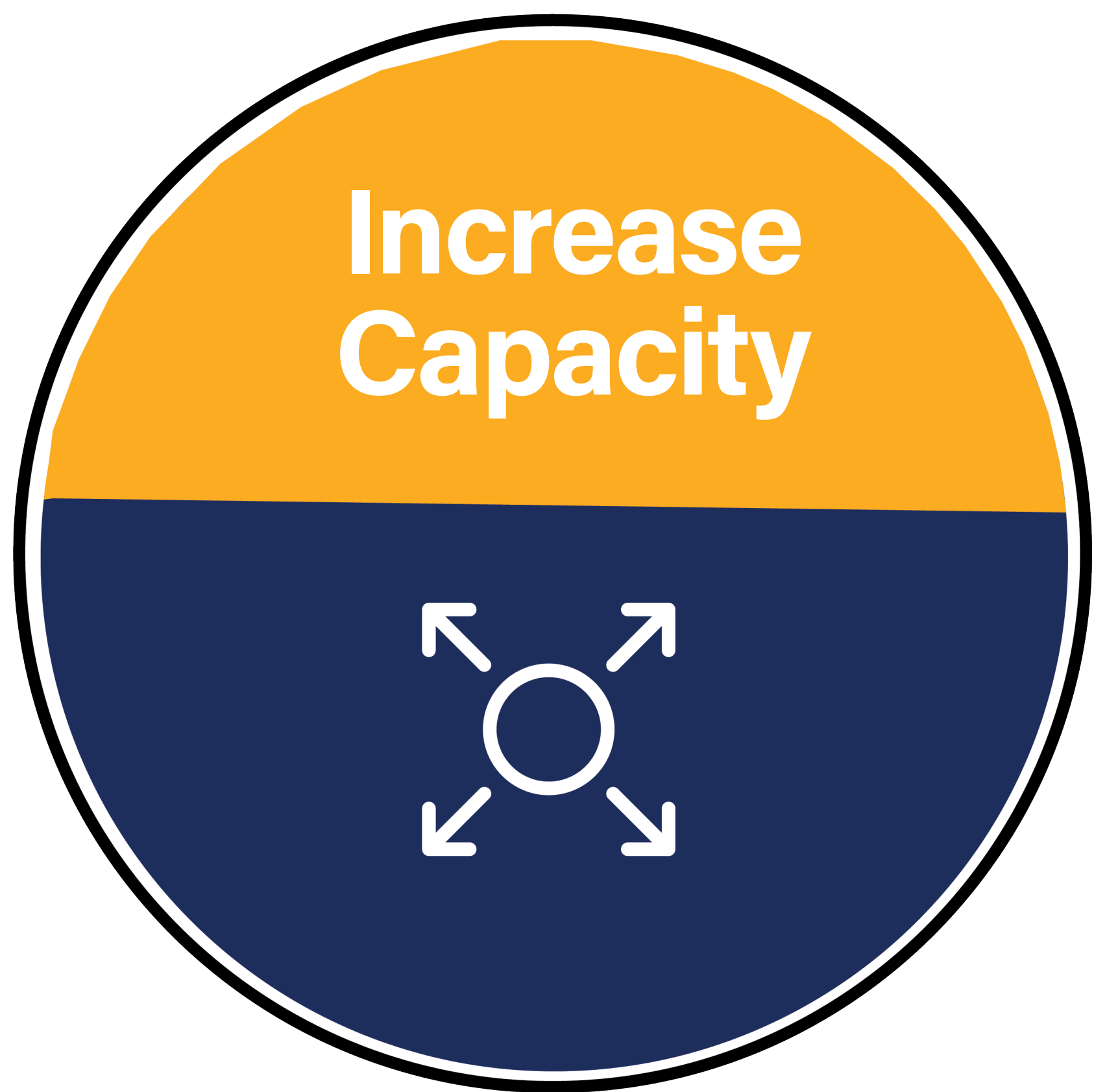


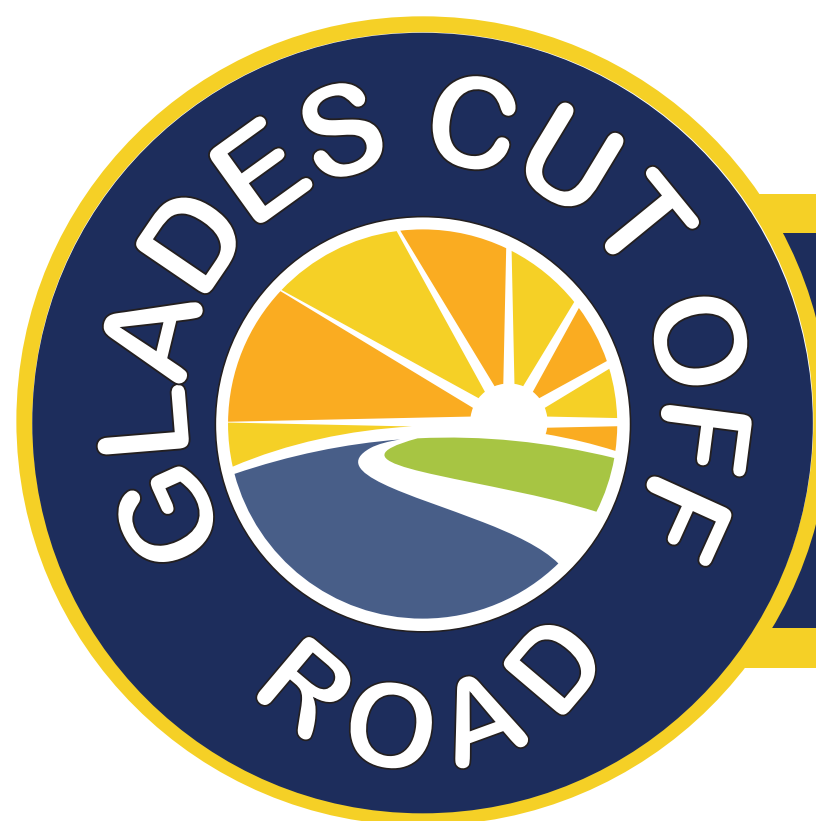


PURPOSE & NEED

The primary purpose of this study is to develop alternatives that address operational and safety deficiencies along the corridor.

The need for this project is to:





Glades Cut Off Road (CR 709) Project Development and Environment (PD&E) Study
From Range Line Road to Selvitz Road
St. Lucie County, FL

Financial Project Identification (FPID) Number: 452761-1-22-01
Efficient Transportation Decision Making (ETDM) Number: 14533

FEDERAL-STATE PARTNERSHIP

The environmental review, consultation and other actions required by applicable federal environmental laws for this project are being, or have been, carried out by the Florida Department of Transportation (FDOT) pursuant to 23 United States Code (U.S.C.) 327 and a Memorandum of Understanding dated May 26, 2022, and executed by the Federal Highway Administration and FDOT.